

## VD Series (Deep)

### Features and Strengths

This cup is best suited to curved or irregular surfaces. Also, it is deep and grip around corners and edges.



### Suitable for Handling

- Automotive Roof and Door.
- Sheet metal
- Plastic sheets
- Sheet veneer
- Shaped sheet metal panels



### Order No.

**VD50 PU - 18F - L 1820T BJ 18**



▶ See pages 60-67.

#### ① Diameter

VD30	- Ø30
VD40	- Ø40
• <b>VD50</b>	- Ø50
VD60	- Ø60
VD70	- Ø70*
VD85	- Ø85
VD85X	- Ø85
VD90F	- Ø90*

\*Only for PU material

#### ② Material

N	- NBR
S	- Silicon
WS	- White Silicon
HS	- High Temp. Silicon
CS	- Conductive (Special mat'l)
U	- Urethane
A	- Mark free
• <b>PU</b>	- Poly Urethane*
WPU	- Poly Urethane* (Minimal mark)

\*Only for VD30,VD40,VD50, VD60, VD70, VD90F

#### ③ Thread size

M8M	- M8 X P1,25 male (VD30, VD40, VD50, VD60, VD70, VD85)
M10M	- M10 X P1,5 male (VD30, VD40, VD50, VD60, VD70, VD85)
• <b>18F</b>	- G1/8" female (VD30, VD40, VD50, VD60, VD70, VD85, VD90F)
14F	- G1/4" female (VD90F)
38F	- G3/8" female (VD90F)
12F	- G1/2" female (VD85, VD90F)
H19	- Ø19 Hole (VD90F)

### Accessories order No.



**L 1820T BJ 18**



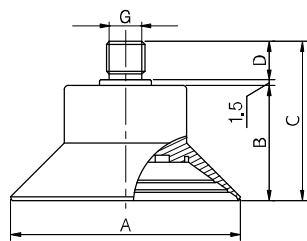
④ Level compensator		⑤ Ball joint model	
Model	Stroke (mm)		
L1805M	5	• BJ 18	
L1810T, L1810TS, L1810TSE	10		
L1815T, L1815	15		
• <b>L1820T, L1820TS</b>	20		
L1820TN*	20		
L1830, L1830T, L1830TS	30		
L1850, L1850T	50		
L1230, L1230T	30		BJ 12
L1250, L1250T	50		

\* Not available with ball joint(BJ)

## Recommended (max.) lifting forces

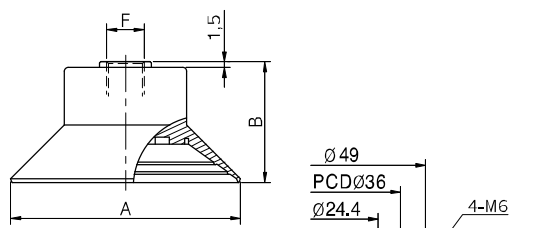
Model	Volume (cm <sup>3</sup> )	Lifting Force (kg) - Perpendicular 			Lifting Force (kg) - Parallel 		
		-20 kPa	-60 kPa	-90 kPa	-20 kPa	-60 kPa	-90 kPa
VD30	4,5	1,22	2,55	3,06	0,73	1,53	1,83
VD40	7	2,04	3,97	5,0	1,22	2,38	3,00
VD50	13,5	3,57	7,44	9,38	2,14	4,46	5,62
VD60	22	5,50	14	18,5	3,3	8,4	11,1
VD70	38	7,15	18,8	24,9	4,2	11,6	16,2
VD85	60	10	28	39	6,0	16,8	23,4
VD85X	68	10	28	39	6,0	16,8	23,4
VD90F	56	9,25	24,36	32,17	7,97	14,42	18,15

## Dimensional information



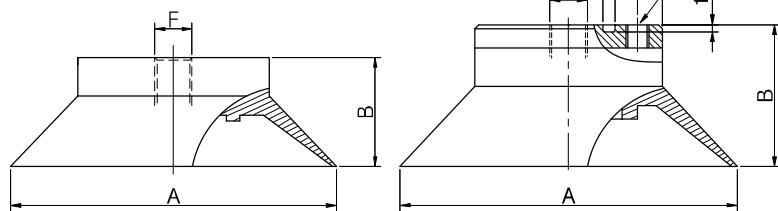
### Male thread

Model	A	B	C	D	G
VD30	30	25	35	10	M8xP1.25 or M10xP1.5
VD40	40	25	35	10	M8xP1.25 or M10xP1.5
VD50	50	25	35	10	M8xP1.25 or M10xP1.5
VD60	61	30	41.5	10	M8xP1.25 or M10xP1.5
VD70	72	30	41.5	10	M8xP1.25 or M10xP1.5
VD85	85	28.5	38.5	10	M8xP1.25 or M10xP1.5



### Female thread

Model	A	B	F
VD30	30	25	G1/8"
VD40	40	25	G1/8"
VD50	50	25	G1/8"
VD60	61	30	G1/8"
VD70	72	30	G1/8"

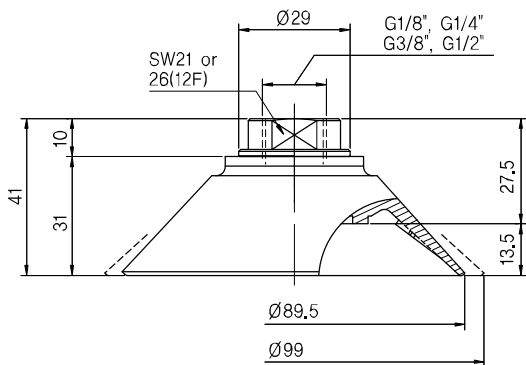


▲ VD 85

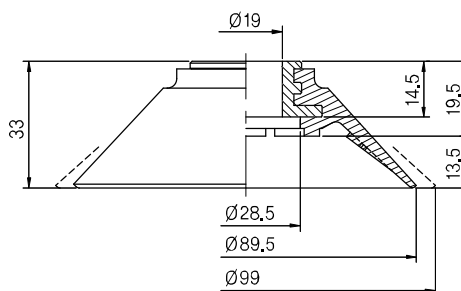
▲ VD 85X

### Female thread

Model	A	B	F
VD85	85	28.5	G1/8", G1/2"
VD85X	88	37	G1/8"



▲ VD90F - 18F, 14F, 38F, 12F



▲ VD90F - H19